



## THE MINERALOGICAL SOCIETY OF NEW SOUTH WALES INC

Website: [www.minsocnsw.org.au](http://www.minsocnsw.org.au)

Please address all correspondence to :-  
The Secretary, 58 Amazon Road, Seven Hills, NSW 2147

### NEWSLETTER FEBRUARY 2024

The February Meeting will be held in the clubrooms of the Parramatta and Holroyd Lapidary Club at 73 Fullagar Road, Wentworthville, on Friday the 2nd of February at 7.30 pm.

There will be lectures to be given by Graham Ogle on :-

#### **Interesting discoveries from the Bamford Mines, Nth Qld**

and also a lecture by Lee Spencer on :-

#### **The 1996 Bre-X Scandal: How Mineral Exploration was set back a decade**

\*\*\*\*\*

### FORTHCOMING MEETINGS and PROGRAMS

March 1<sup>st</sup> : There will be a lecture by Luis Martins on 'Jáchymov: Wonder Mining Town in the Ore Mountains, Czech Republic'.

There will also be a talk by Geoff Parsons on :- 'Minerals and Metals – How and Why'

April 5<sup>th</sup> : Arnold van der Heyden will give a lecture on the MMM Minerals Project, Broken Hill, (full title to be confirmed), and Mark Walters will give a talk on 'A Visit to Other Mines in the Bamford Area, Nth Qld'.

May 3<sup>rd</sup> : Member's Annual Mineral Auction.

\*\*\*\*\*

### The SOCIETY COMMITTEE

PRESIDENT:	Dieter Mylius	Mobile: 0412 516 193
	E-mail:	<a href="mailto:dieterm@internode.on.net">dieterm@internode.on.net</a>
VICE-PRESIDENT:	John Chapman	Tel: (02) 9808 3481
	E-mail:	<a href="mailto:chapmanjr@optusnet.com.au">chapmanjr@optusnet.com.au</a>
SECRETARY:	George Laking	Tel: (02) 9636 7145
	E-mail:	<a href="mailto:bglaking@tech2u.com.au">bglaking@tech2u.com.au</a>
TREASURER:	Graham Ogle	Mobile: 0400 683 574
	E-mail:	<a href="mailto:quartzandsirius@hotmail.com">quartzandsirius@hotmail.com</a>
COMMITTEE MEMBERS:	Haley Bambridge	Mobile: 0413 100 344
	Denis O'Brien	Tel: (02) 6360 3412
	Geoff Parsons	Tel: (02) 9548 3289
	Mark Walters	Mobile: 0421 012 647

Ed Zbik

Mobile: 0401 538 480

## SOCIETY LIBRARY

### THE AUSTRALIAN JOURNAL OF MINERALOGY

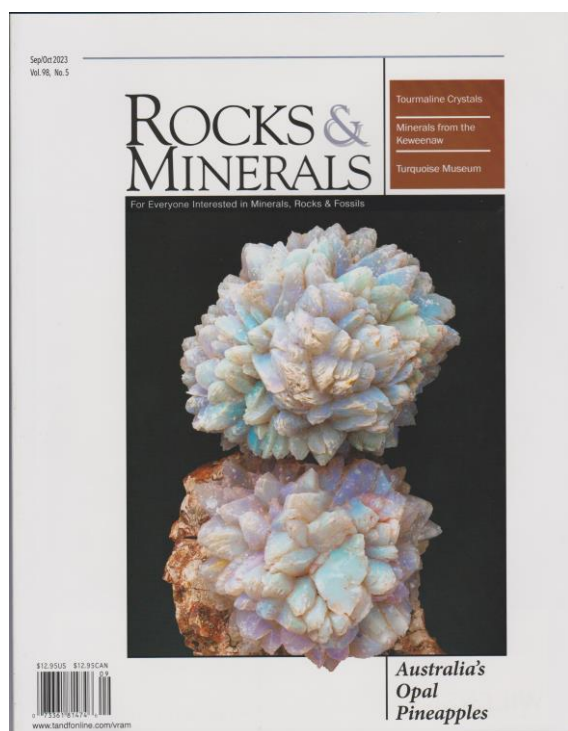
The A.J.M., Volume 24, Number 2, December 2023, has been published and distributed to subscribers early this month. This issue contains articles on : - 'Rare Mineral species from the Kimberley Region'; 'Exceptional Linarite and Associated Minerals from the cliff workings, Red Rock, Drake Goldfield'; 'Minerals from the Iron Monarch Mine, S.A.'; 'A Tale of Mineral Identification' by Geert Buters; 'The Walsh Point Epidote Discovery, Mitchell Plateau, W.A.'; and a report on the Yinnetharra Field Trip in W.A. made by members of the W.A. Mineralogical Society in August last year.

The Iron Monarch article is a photographic essay by John Haupt with two dozen images of some of the more superlative minerals among the 166 recorded from this location.

The Society subscribes to the A.J.M. and has a full set of the Journals in the Society Library at the Lapidary Club and which are available for borrowing.

\*\*\*\*\*

### THE ROCKS & MINERALS MAGAZINE



The Society also subscribes to the (U.S.) **Rocks&Minerals Magazine** and has a substantial number of back issues to about the year 2000 in the Library. There are six issues per year of the magazine which in size, pictorial quality and quantity, and article content compares equably with the Mineralogical Record.

The September - October issue of Rocks& Minerals has a large article 'Opal Pineapples from White Cliffs, N.S.W.' with an array of images of the mining area and a selection of photographs of fine opal 'pineapples'.

In addition to the article on Opal Pineapples there are four other major articles and a number of other items and reports.

\*\*\*\*\*

### The MINERALOGICAL RECORD

The Society has two complete sets of the Records back to Volume 1, Number 1. All are available for borrowing.

Members should refer to Ed Zbik about borrowing any issues.

\*\*\*\*\*

## The December 2023 Christmas Social

The Christmas Social held as usual at the Parramatta and Holroyd Lapidary Club was quite successful again this year and attended by fifty members. The attendance was an encouraging increase from the previous year, and hopefully Society activity attendances are returning to pre-COVID levels.

Whilst the Society had been prepared to set up tables with awnings outside the Lapidary club rooms. this year with the exception of the lunch table and the BBQ all the displaying and selling of minerals took place indoors. Given the number of sellers who turned up they could all be accommodated indoors and all opted to do so but a lesson for future Socials is that there is obviously a limit to the amount of room within the Club and if a larger number of sellers arrive in future some would have to set up outside. When this was done for the 2021 Social sellers and buyers were quite comfortable outdoors.

The sausage sizzle was clearly well appreciated and thanks are due to the cooks who supervised the BBQ. By lunchtime the members attending had mostly moved outside. The food and drink supplies stretched out very well, with nothing running out but most being consumed and not much taken away afterwards.

\*\*\*\*\*

## The National Gem & Crystal Expo 2024

The 2024 Expo is being held over the weekend of the 20th & 21st of April in the Hawkesbury Indoor Stadium, Stewart St, South Windsor. The Expo is probably currently the largest Gem and Mineral show being held in N.S.W and last year attracted over 3800 visitors with a bigger crowd expected this year.

Peter Beckwith has again invited members to represent the Mineralogical Society at an information table to explain about and promote the Society, to hand out promotional leaflets, answer queries from visitors, set up a display of a microscope with suitable micro-mounts and provide larger specimens which could be shown to and handled by visitors. Given the expected number of visitors to the Show the information table would be an ideal means of promoting the Society and indicating to the general public our activities.

In addition members are invited as before to provide a larger display of specimens for showcases which will be situated in the centre of the Show area. A floor plan has been provided. The showcases would be 10 x 2meters tall by 1.2meters wide.

Any members who would be able to participate in the Show, to 'man' the information table for a period, (suitable 'rostering' would be arranged), or to provide a display of specimens is invited to notify the Secretary, George Laking, or other Committee member, and discuss what could be arranged.

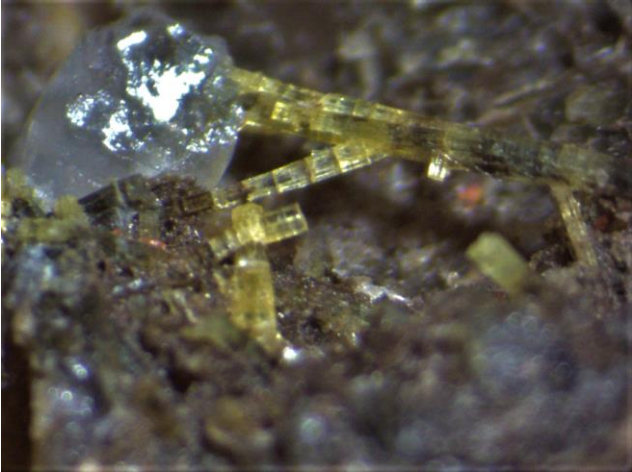
\*\*\*\*\*

### A Report about some Mineralogical Finds in central NSW by Denis O'Brien

TOURMALINE VAR. ELBAITE (?) FROM THE  
BLACKFELLOWS DAM MINE CONDOBOLIN, NSW  
Denis O'Brien

Acicular crystals found in small cavities in granite rock associated with purple fluorite.

Crystal colours vary from lemon yellow to golden yellow to almost colourless. Crystals are sometimes slightly bent. Most are segmented and often slightly tapering.



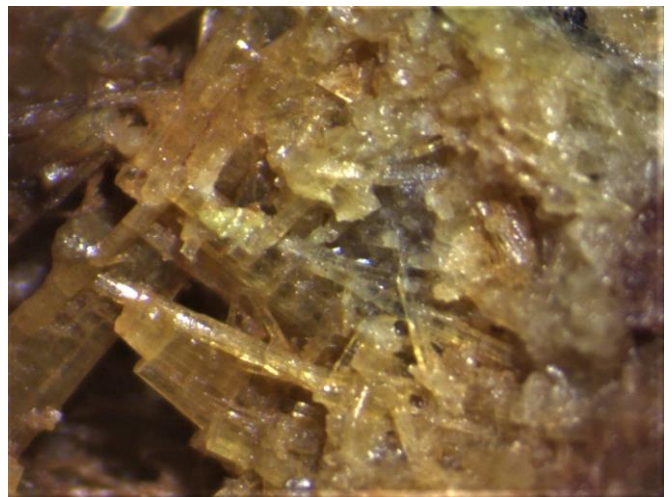
Zoned, segmented lemon yellow crystals  
FOV 5mm.



Clustered acicular golden yellow crystals  
FOV 10mm



Purple fluorite with Elbaite (?) crystals  
FOV 10mm



Crystal colour varies from colourless to golden yellow  
FOV 10mm

\*\*\*\*\*

## FORTHCOMING EVENTS

Illawarra Lapidary Club Inc 2024 ROCK SWOP on Sunday 25th February

'At Stuart Park, George Hanley Drive, North Wollongong between 8am and 2 pm Club members and others will be selling Jewellery, Gemstones, Cabochons, Minerals, Opals, Findings, Beads & Fossils and maybe some Lapidary equipment. Come along for a great day.'

You can find us at our website [www.illawarralapidaryclub.com.au](http://www.illawarralapidaryclub.com.au)  
or like and follow us on Facebook: <https://www.facebook.com/IllawarraLC>

\*\*\*\*\*

Minerama 2024, Glen Innes, Annual Gem Show  
To be held in the Show Grounds, Glen Innes, NSW  
Fri 8th - Sat 9th - Sun 10th March 2024

Trading Hours: - 9:00am - 4:00pm Fri - Sat and 9:00am - 2:00pm Sun

The Minerama is held annually in March at Glen Innes, NSW. This gem show is one of the largest annual gem shows in NSW and features fossicking and field trips for a variety of gems in the area, (eg. sapphire, garnet, topaz, quartz crystals, etc). Field trips held are suitable for both beginner and expert fossickers and will visit some locations not normally open to the public.

The gem show will be attended by a large number of traders in gems, lapidary supplies, minerals, fossils, jewellery and much more with gemmologists/ and faceting experts available for advice throughout the weekend.

Contact: website -<https://www.minerama.com.au>

\*\*\*\*\*

## 2024 CANBERRA ROCK SWAP

The 2024 Rock Swap will be held on Saturday 16 and Sunday 17 March in the Parrot Park, EPIC (Exhibition Park In Canberra), off the Federal Highway Canberra. Dealers and fossickers will be selling jewellery, gemstones, fossils, rocks, mineral specimens and lapidary supplies.

For further information on any Canberra Lapidary Club events, please check out the events page at <https://www.facebook.com/people/Canberra-Lapidary-Club-Inc/100094226447908/>.

Or contact the Club's Show Convener, Norm Menadue on (02) 6258 6631,

Email : [nmenadue@optusnet.com.au](mailto:nmenadue@optusnet.com.au)

\*\*\*\*\*

## GEMBOREE 2024

The 60<sup>th</sup> Gemboree, the National Gem & Mineral Show, will be held over Easter 2024, from the 29<sup>th</sup> of March to the 1<sup>st</sup> of April in Willunga, S.A.

For more information: [www.gemboree2024.com.au](http://www.gemboree2024.com.au).

The Gemboree 2024 booklet may be downloaded from the AFLACA website.

\*\*\*\*\*

## The Lismore Gemfest 2024

The Gemfest is being held over the weekend of the 18th and 19th of May in the Lismore Showgrounds at 116 Alexandra Road, Lismore.  
Sat 9:00 am - 5:00 pm; Sun 9:00 am - 3:00 pm.

The Gemfest is hosted by the Lismore Gem and Lapidary Club Inc and is one of the largest Gem and Mineral shows regularly scheduled in N.S.W.

Contact: [lismore.gemfest@gemclublismore.org.au](mailto:lismore.gemfest@gemclublismore.org.au)

Web: [www.lismoregemfest.com.au](http://www.lismoregemfest.com.au)

\*\*\*\*\*