



THE MINERALOGICAL SOCIETY OF NEW SOUTH WALES INC

Website: www.minsocnsw.org.au

Please address all correspondence to :-
The Secretary, 58 Amazon Road, Seven Hills, NSW 2147

NEWSLETTER APRIL 2019

The April Meeting will be held on Friday the 5th of April at 7.30 pm in the clubrooms of the Parramatta and Holroyd Lapidary Club at 73 Fullagar Road, Wentworthville.

The program at the April Meeting will comprise a talk to be given by Dieter Mylius on the :-

Kyloe Copper mine near Adaminaby

The talk will be followed by a lecture given by Mellissa Murray on :-

‘Magnificent Minerals in Museum collections: The Albert Chapman Collection.’

FORTHCOMING MEETINGS AND PROGRAMS

May 3rd : Member’s Annual **Auction**.

June 14th (Second Friday): The program for the June Meeting is not yet finalised.

July 5th : There will be a lecture given by David Colchester on :-
‘Why Rely on Nature When You Can Make Your Own Minerals’.
There will also be a report to be given by Paul Meszaros on :-
‘The NSW Economic Rock and Mineral Collection – Latest Developments’.

August 2nd : A.G.M. The Mayne/Walker Memorial lecture will be given by Peter Williams and Jim Sharpe on :- **Secondary Copper minerals of the Mt Isa District.**

September 6th : Program not finalised.

October 11th (Second Friday): There will be a lecture on **Mineral Museums in Australia and Overseas** by Dieter Mylius and Graham Ogle.

The MAY MEETING AUCTION

Members are reminded about the forthcoming **Member’s Auction** to be held during the May meeting on May the 3rd and are recommended to select their specimens for sale within the next three weeks. The Society Auctions have regularly and readily sold about eighty specimens at each sale over about two hours but in order not to exceed this time the total number of specimens has to be limited to eighty, or to ten per vendor.

A list of each member's sale specimens should be provided to Jim Sharpe before the 20th of April so that he can compile and distribute an auction list in advance. Jim may be contacted by phone (02) 9871 2502 or by e-mail:- sharpejames@tpg.com.au. Members should clearly label their specimens and after each list is sent to Jim he will provide vendors with lot numbers to add to their specimen labels

In addition to the regular auction minerals can also be sold by silent auction. Members may bring in one or two trays or boxes of specimens to leave on a table accompanied by a bid form which will be provided. There will be no need to advise Jim in advance regarding the silent auction as the boxes will not be listed.

2019 Society Membership Fees

Society membership fees were due from January 1st and currently the Society has about eighty financial members which is about two thirds of those who were financial by the end of 2018. Accordingly there are still a number of members who were financial last year but who have overlooked paying their subscriptions. Please consider whether you have paid and if not you are invited to rectify the situation.

The Society carries several insurances to protect the Society, the members and third parties against injury, damage or financial loss etc. Full insurance cover for members is subject to them being financial for the current year. According to the Society Constitution membership is valid in any new year up to March 31st when it will be deemed to have lapsed but would be re-instated immediately upon payment of the current year fee.

FIELD TRIPS

Revisit to Cobar, Manuka, Mount Hope, Condobolin

Planned to start between June 20th and 23rd June, ending June 30th, Manuka is now confirmed and plans for other sites are under way. The dates are not firmly set until confirmation from other mining companies and landholders are approved. Tentative dates are:

- 1 day Travelling to Nyngan First day is a 500km drive to assembly point.
- 2 days around Cobar
- 2 days at Manuka
- 2 days around Condobolin
- 1 day travelling back to Sydney Last day is a 500km drive home (30th June).

Requirements are:

- Must be a Financial Member.
- Must hold current SWMS Certification.
- Must have full PPE kit, priority will be given to those who are fully kitted out.
- Preferred member to have own UHF CB radio and First Aid Kit.

Eighteen members have registered, four are SWMS Certified.

To register, email ecjz@optusnet.com.au

CSIRO

A number of members over the past weeks have been gathering and sorting minerals from the CSIRO ore, rock and coal collection. The best part has been moved to other areas within CSIRO. The remainder can be collected by the Society to be used for the Society's Monthly Lecture Sales, the Kids for Cancer sale and research. Specimens cover Australia and the rest of the world.

Specimens are suitable for the micro group and will be retained for the micro group.

If you are interested in obtaining:

- Coal Dust
- Analytic data memorabilia, old xrd negatives, petrographic slides
- Unlabelled minerals, i.e. known mineral but unknown location, known location but unknown mineral or name of specimen and location is unknown
- Core bits and core buttons.

Send an email to ecjz@optusnet.com.au

If you are interested in helping during the week in business hours in packing, sorting and transporting **Please send an email to ecjz@optusnet.com.au**

RESPECT THE LAPIDARY CLUB'S FACILITIES

The Mineralogical Society has been pleased over the last three years to have been allowed to use the Parramatta and Lapidary Club's rooms for its meetings and we would hope to continue this surely mutually beneficial association. However the Club's facilities need to be treated with respect and care. Society members are asked not to place plates, drinking cups or beakers on the Club display cases or leave unconsumed refreshment items about the room. In the March issue of the Club '*Lapidiary*' magazine there is a notice from the Club management asking its members not to take any foodstuffs into the Library or the rear room, as follows :-

**There is to be NO FOOD OR DRINK to be taken into,
or past the doors to, the back workrooms area or the Library.**

The Society should certainly take it that the above notice applies to Society members also so please let us leave the room as we find it and tidy up as thoroughly as possible after our meetings.

The SOCIETY COMMITTEE

PRESIDENT:	Dieter Mylius	Tel: (02) 9477 1060
	E-mail:	<i>dieterm@internode.on.net</i>
VICE-PRESIDENT:	John Chapman	Tel: (02) 9808 3481
	E-mail:	<i>chapmanjr@optusnet.com.au</i>
SECRETARY:	George Laking	Tel: (02) 9636 7145
	E-mail:	<i>bglaking@tech2u.com.au</i>
TREASURER:	Graham Ogle	Tel: (02) 9868 4446
	E-mail:	<i>quartzandsirius@hotmail.com</i>

COMMITTEE MEMBERS:	Peter Beddow	Tel: (02) 8810 8446
	David Colchester	Tel: (02) 9449 3862
	Geoff Parsons	Tel: (02) 9548 3289
	Simon Tanner	
	Edward Zbik	Tel: (02) 9638 6586
	E-mail:	<i>ecjz@optusnet.com.au</i>

WELCOME

Welcome to returning ex-member Marc Vromen, new member Noam Vromen of Mascot and Glen Cathers of the Geological Survey of N.S.W

THE MARCH MEETING

Ed Zbik reported on his progress in organising **Field Trips** for later in the year. He was finally receiving responses to inquiries he had made about visiting mineral-significant sites. A repeat trip to **Manuka** was confirmed for the 26th to 28th of June with possibly three to four days spent travelling and visiting other sites in the Cobar and Condoblin areas both before and after the visit to the mine. Further information would be distributed in due course and when the itinerary had become more well established to members who had inquired or had indicated that they wished to join the trip.

At the end of March Ed Zbik would be visiting the **Canberra Rock Swap** on Saturday the 30th and then on Sunday 31st visiting the Paddys River area, noted for the presence of magnetite skarns. Members interested in accompanying the trip were invited to put their names on a list.

Graham Ogle announced that the next meeting of the **Micro-Mineral Group** would be on the following Saturday fortnight and would be at John Chapman's house in Ryde. The group would be studying Broken Hill minerals. The next month's meeting would be at Brian England's house in Maitland but since it had been decided and then arranged that most meetings throughout the rest of the year would be held in the Lapidary Club it had been decided to change the meeting date to the third Saturday of each month in order to avoid clashing with the Club's schedule of other Saturday activities.

Brian Holden reported that this year's **Glenn Innes Minerama** was to be held in the Showground and not the Services Club. It would be held over the following weekend, Friday to Sunday March 8th, 9th and 10th.

Dieter Mylius pointed out that occasionally members at the rear of the Meeting room might start talking among themselves when a lecturer was speaking. Members were particularly asked to refrain from doing this.

Gypsum Occurrences in Cyprus

John Chapman

The lecture commenced with the speaker asking members if they knew the meaning of the term 'Messinian Salinity Crisis'. This was an event occurring relatively recently in geological terms when due to

gradual tectonic movements affecting the Mediterranean area some 5.9 million years ago the Straits of Gibraltar closed up, isolating the Sea from the Atlantic Ocean. Since the climate may have been more hot and dry at this time more water was lost due to evaporation than was being replenished by rivers flowing into the Mediterranean basin. Over a period of probably only a thousand years the Sea dried up almost completely with possibly only a few deep lakes of hyper-saline water remaining, similar to the Dead Sea today. In the drying up process large and deep deposits of evaporites of salt and gypsum were created. The isolation of the Mediterranean ended about 5.3 million years ago when the Straits opened up and the basin was filled up again from the ocean.

Today in a number of the countries and islands in and around the Mediterranean examples of the evaporate deposits can be seen and studied and there are indications from the strata layers that the Messinian event has occurred a number of times in the past. Notably the island of Cyprus has large deposits of gypsum left from the Messinian process and John Chapman proceeded to describe these with the aid of a number of images of the outcrops to be found on the island.



Outcrops of Gypsum on Cyprus

Gypsum deposits elsewhere in the Mediterranean have sometimes formed crystal caves similar to although not as large as those found in Naica in Mexico and the speaker showed an image of one such cave in the Pilar de Jaravía lead mine in Almeria, south-east Spain. The cave is about eight meters in length and at about fifty meters depth, approximately at sea level and about three kilometers from the coast.



Almeria Geode. Pilar de Jaravía lead mine, Spain.



Selenite crystals

Having introduced the Messinian event John Chapman moved on to describe how a similar event, of a large body of water being isolated and then opened to the ocean had happened even more recently in geological times. The Black Sea has not been connected to the Mediterranean until relatively recently on the geological

time scale and for most of its history has been a relatively fresh-water lake with a water level lower than the nearby Mediterranean. Then approximately 10,000 years ago Mediterranean water started making its way into the Black Sea through the Dardanelles and Bosphorus straits raising the level of the Black Sea and inundating large areas of low-lying land particularly around the north and north-west coast. Whether the inflow was very rapid or more gradual over a number of years is not certain but it would have affected prehistoric Neolithic communities living in those areas which would have had to move away. Also whether the changes contributed to cultural memories and oral histories of a great flood among the prehistoric people in the area at the time is only a hypothesis.

Vesuvius Visited

Graham Ogle

Graham Ogle gave a lecture to the Society ten years ago on the Minerals of Mt Vesuvius and since then has been able to spend a prolonged visit to the Naples and Vesuvius area collecting an amount of specimens and taking a large number of photographs. A selection of these were shown to the meeting as he spoke and provided a very thorough description of the volcano, its history and that of the surrounding countryside including Pompei and the city of Naples including the geological museum, people and collecting or touring groups with whom he made friends in the course of the visit and a large number of the minerals that have been found there.

The present-day cone of Vesuvius was actually formed mainly during the eruption of 79AD when Pompei and Herculaneum were buried and the Roman military official and historian Pliny the Elder was killed by the eruption when trying to rescue people in the towns. It is currently 1,281 meters in height and had built up over many centuries in the caldera left after an eruption of the original Mt Somma some 18,300 years ago. Volcanic activity in the area goes back some 400,000 years and there are many still active surface features. Major eruptions of Vesuvius have occurred a number of times since 79AD and examples of lava specimens from the various eruptions, from 1631, 1906, 1944 etc, are readily available to collectors.



Mt Somma, (left-hand cone), and Vesuvius. The view looking southwards.
The Bay of Naples to the right, some of the city in the foreground.

Initially Graham Ogle described the Volcano and the types of eruptive processes that it has undergone, noting that there have been very many over the course of the last two thousand years since the eruption of 79AD. The eruptions have deposited various amounts and types of lava, rocks, consolidated ash layers and a variety of minerals. He described in some detail the eruption of August AD79 when Pompei and Herculaneum were buried and between 10,000 to 25,000 people died. Over nineteen hours four cubic kilometers of ash and lava was ejected from the volcano. 38% of victims were found in ash fall deposits the rest inside buildings which had collapsed.

A number of images were shown of the remains of some of the people who died, a row of preserved footprints of someone running, their utensils and even of preserved lava casts of loaves of bread that had been prepared just before the eruption. There were also displayed images of Pompei today which has still not been completely excavated. It was a wealthy coastal town with big houses, bakeries, bath houses and taverns, showing painted walls and even roman graffiti.

There were a series of views of the volcano some looking inside the crater after the speaker and groups of tourists whom he had joined had made their way up to the edge of the caldera. Other views were of some of the tourists looking for minerals, there were no restrictions on collecting.



Toiling their way up to the edge of the caldera.



More cheerful collecting.

The speaker described the series of eruptions since 79AD and showed a list of over thirty of these, mostly categorized as ‘explosive’ (meaning very large amounts of material were flung high into the air), and/or ‘effusive’ (involving substantial lava flows). Samples of specimens from many of the different lava flows were readily available to collectors and the speaker had brought in a number of examples to display. The 1944 eruption and the damage done to American Air force planes on an airfield near the volcano was featured.

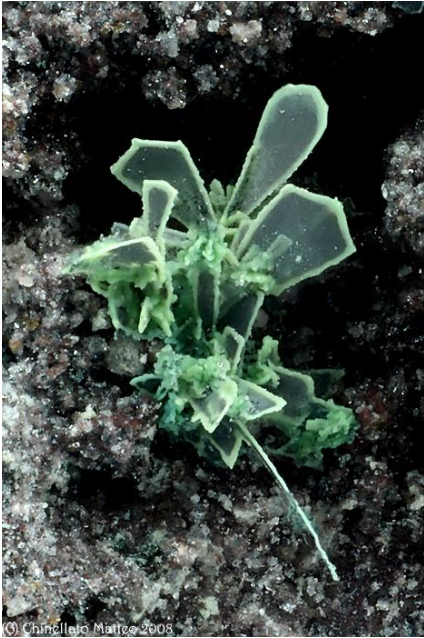


March 1944



Merlinoite. (Zeolite group)

A large number of minerals have been recorded from Vesuvius and Mt Somma and Graham Ogle showed a list of these. There are 256 minerals that have been found which places Vesuvius in the top ten sites in the World to have produced the most minerals. These include 44 type locality minerals, with two doubtful, 25 from Vesuvius and 21 from Mt Somma. The speaker had brought back about 26 kilos of specimens from his visit which included a number of micro-minerals and he expected that in due course he would take these for studying at a Micro-Mineral Group meeting.



Paratacamite coating tenorite



Microsommite. Cancrinite group.

During his visit to Italy the speaker was able to spend some of his time touring Naples, to meet a number of interesting people including local collectors and visit some of the more palatable restaurants and coffee houses. He was also able to join a group visiting the *Real Museo Mineralogico* a prime mineral museum in Naples which was founded in 1801 by one of the Hapsburg princes and took many photographs of the exhibits. These comprised an international collection as well as minerals specifically from Vesuvius.



Real Museo Mineralogico, Napoli.



Every collector should have a garage

Towards the end of his visit Graham Ogle visited the Phlegraean Fields which are in the western outskirts of the city of Naples. Geologically the fields are a large volcanic area about thirteen kilometers across

and include some nearby islands. The currently most active part is an area of broken ground with many fumaroles and pools with boiling mud. It is near the coast and across the bay of Pozzuoli from the peninsula of Misenum where Pliny the Elder was living when the 79AD eruption started.



The Phlegrean Fields



The Misenum peninsula.

FORTHCOMING EVENTS

GEMBOREE 2019

The 55th GEMBOREE is being held in the Rockhampton Showgrounds, Rockhampton QLD over Easter, Friday to Monday, the 19th to 22nd of April.

The Gemborees are organised each year by AFLACA, (The Australian Federation of Lapidary and Allied Crafts Association Inc). The 2019 GEMBOREE is being hosted by the Queensland Gem Clubs Association Incorporated (QGCA). GEMBOREEES are hosted in a different state and city each year by the state body, the 2020 event will be held in Albury.

Further information is available on the websites 'GEMBOREE Advance Rockhampton'.

Blaxland Gem & Mineral Club Gem Show

We are pleased to advise that Blaxland Gem & Mineral Club will be holding our annual open day on Saturday 4th May 2019. Details are as follows:

Date: Saturday 4th May 2019, 8am - 3pm
 Venue: 15 The Valley Rd, Valley Heights, NSW 2777
 Displays and sales of Lapidary work, rocks and slabs.
 Demonstrations on cutting, grinding and polishing gemstones.
 Refreshments available. FREE ADMISSION.

29th LISMORE GEMFEST 2019

The 29th Lismore Gemfest will be held in the Lismore Showgrounds, Alexandra Parade, North Lismore, over the weekend of the 18th and 19th of May next. Saturday from 9am to 5pm and Sunday from 9am to 3pm.

Quoted from the Lismore Gem Club website : -

'Lismore GEMFEST is the biggest annual event in the country devoted to lapidary and allied arts and is organised by the Lismore Gem & Lapidary Club Inc. Exhibitors come from all parts of the country and range from amateurs to the most experienced professionals. Everything from rough stone for cutting, through to finished jewellery in all price ranges, along with mineral specimens, fossils, gold nuggets and meteorites are to be found on display. There are gem sieving activities for children, demonstrations of jewellery making and other craft activities.

A range of food outlets are available, along with free parking in the Lismore Showground. Visitors from outside of the local area can enjoy special deals for camping on site. There is something for all ages and tastes at this event. Come once and we are sure you will become a regular.'

Further information from : - bruce.copper@bigpond.com, Telephone 02 6688 8280, Or from the Website : - www.gemclublismore.org.au

The Yagoona Gem and Mineral Fair.

Over Saturday the 1st and Sunday the 2nd June 2019 in the Arena Sports Club, 140 Rookwood Road, Yagoona. Hosted by The Bankstown and Districts Lapidary Club and Kristallen.

'Traders from around Australia will be displaying their wares as well as displays and demonstrations by the Bankstown & Districts Lapidary Club. Items for sale by the many traders there will include Jewellery, gemstones, beads, opals, carvings, gem rough, lapidary cutting rough, fossils, meteorites, metaphysical and healing crystals, mineral specimens from all over the world. A great day out for the whole family.

Adults \$7, kids with parent/s are free! There is also a great lucky door prize for one lucky person who comes! Opening hours are 9:30 till 5:00 on Saturday and 9:30 till 4:00 on Sunday.'

For more information please contact Peter at raregems@optusnet.com.au or 0412 333 150.

Windsor Gem and Mineral Fair

Over Saturday and Sunday the 15th & 16th of June at the Windsor Function Centre on the corner of George Street and Dight Street Windsor.
Hosted by the Hawkesbury Valley Lapidary Club and Kristallen.

'The show will have a number of traders from around Australia displaying their wares as well as displays and demonstrations by the Hawkesbury Valley Lapidary Club.

Items for sale by the many traders there will include Jewellery, gemstones, beads, opals, carvings, gem rough, lapidary cutting rough, fossils, meteorites, metaphysical and healing crystals, mineral specimens from all over the world. A great day out for the whole family. Adults \$7, kids with parent/s are free! Opening hours are 9:30 till 5:00 on Saturday and 9:30 till 4:00 on Sunday. There is also a great lucky door prize for one lucky person who comes!'

For more information please contact Peter at raregems@optusnet.com.au or 0412 333 150

THE JOINT MINERALOGICAL SOCIETIES OF AUSTRALASIA 42nd ANNUAL SEMINAR

The 42nd Joint Seminar of the Mineralogical Societies of Australasia will be held in the State Library of WA in Perth over Saturday and Sunday the 31st of August and 1st of September 2019 on the theme : -

Traps In Mineralogy – Pseudomorphs, Look-Alikes, Fakes and Synthetics

The full Seminar program includes a Micromount session to be held at the WA Lapidary Club, Rivervale, a Swap and Sell on Monday 2 September also at the WA Lapidary Club, Rivervale (\$5.00 per table for sellers), and a field trip to the Murchison Region on Tuesday the 3rd of September.

Registration fees if paid before the end of February were discounted but are now \$150.00 for MinSoc or like-Society Members, \$185.00 for non-members and \$75.00 for students.

The Conference dinner, (\$65), and Mineral Auction will be held on Saturday evening at the Mercure Hotel, Perth CBD.

Inquiries for information, registration and bookings may be made to : -

Lee Hassan

Honorary Secretary/Treasurer

The Mineralogical Society of Western Australia Inc.

lee_notebook@msn.com

http://www.minsocwa.org.au

The Blaxland Gem & Mineral Club Annual Gem Show

Saturday and Sunday August 17th and 18th 2019

Glenbrook Community Hall, Great Western Highway, Glenbrook, NSW

(Next to Glenbrook Theatre) just west of Information Centre.

http://www.freewebs.com/blaxlandgemmineralclub/BGMCshow.htm

8 am to 4 pm Daily. Entry: Adults: \$3 Children \$1.

GEMKHANA 2019

The Annual Gem & Mineral Show and Competition of lapidaries from all over NSW will be presented by the Gem and Lapidary Council of NSW Inc, at the Hawkesbury District Agricultural Showground, 40 Racecourse Road at Clarendon outside Richmond over the weekend of the 28th and 29th of September. From 9am to 5pm each day.

Visitors please note: These dates are the weekend before the October long weekend of the 5th to 7th October.

For further details email *gemkhana@gemlapidarycouncilnsw.org.au*
