



## THE MINERALOGICAL SOCIETY OF NEW SOUTH WALES INC

Website: [www.minsocnsw.org.au](http://www.minsocnsw.org.au)

Please address all correspondence to :-  
The Secretary, 58 Amazon Road, Seven Hills, NSW 2147

### NEWSLETTER      APRIL 2018

**The April Meeting will be held on Friday the 6<sup>th</sup> of April at 7.30 pm in the clubrooms of the Parramatta and Holroyd Lapidary Club at 73 Fullagar Road, Wentworthville.**

The program at the April Meeting will include a number of talks on :-

#### **‘Pyrite. –How, Why & Where’**

The program will be a symposium which will provide presentations on pyrite chemistry, crystallography, locations, a description of the varieties of specimens and why collectors should like the mineral.

Speakers will include John Chapman, Peter Williams, Brian England and Peter Beckwith.

Members are invited to bring in specimens of pyrite to display and help illustrate the talks.

\*\*\*\*\*

### FORTHCOMING MEETINGS AND PROGRAMS

May 4<sup>th</sup> :      Member’s annual **Auction**.

June 1<sup>st</sup> :      There will be a talk by Simon Tanner on :- ‘**Broken Hill Rock On – A Review**’  
and a lecture to be given by Graham Ogle on :- ‘**The Fluorescent Minerals of Sterling Hill**’.

July 6<sup>th</sup>:      Lecture by Keith Compton on – ‘**What’s New in Mindat**’.

August 3<sup>rd</sup>:      **Society A.G.M.** and the Betty Mayne, Edna and Harold Walker Memorial Lecture.  
The Memorial lecture this year will be given by Professor Patrick De Decker on :-  
‘**The First Geological Map of England and Wales**’

September 7<sup>th</sup>:      Lecture by Jeff Davis on :- ‘**Elements That Make Up Minerals**’.

October 5<sup>th</sup>:      The program will include talk a by Professor Peter Williams on :- ‘**Misleading Mineral Locations**’. The talk will be followed a lecture to be given by Ross Pogson on :-  
‘**The Molong Pallasite Meteorite**’

November 2<sup>nd</sup>:      Lecture to be given by Glen Cathers on :- ‘**The Sepon Copper Mine, Laos**’.

December 7<sup>th</sup>:      **Christmas Social and ‘Swap n’ Sell**’.

\*\*\*\*\*

## **The MAY MEETING MINI-AUCTION**

The annual **Member's Mini-Auction** will be held at the 4<sup>th</sup> of May Meeting and will take up the entire evening from 7.30 pm to about 9.30pm. There has to be a limit of eighty on the number of specimens which can be auctioned in one night so members intending to enter lots in the Auction are asked to limit themselves to ten specimens each.

During the Auction if someone feels that bidding on any of their specimens is not proceeding high enough they can bid for the specimen themselves to take it back. The Society takes no commission on the sales and will not enter into any transactions which must be entirely between the vendor and purchaser.

So that an auction list can be prepared and distributed in advance please provide Jim Sharpe with a list of your specimens to be auctioned before the 20<sup>th</sup> of April. Contact Jim by phone (02) 9871 2502 or by e-mail:- *sharpejames@tpg.com.au*. Vendors will be provided with a list of lot numbers to add to their specimen labels.

In addition to the regular auction minerals can also be sold by silent auction. Members may bring in one or two trays or boxes of specimens to leave on a table accompanied by a bid form which will be provided. There will be no need to advise Jim in advance regarding the silent auction as the boxes will not be listed.

**Please clearly label all your specimens and boxes.**

\*\*\*\*\*

### **MINERALS MAY BE OFFERED FOR SALE AT ANY MEETING**

Members who have specimens to sell in addition to those that they may bring to the Auction are advised that minerals could be brought in to any meeting and offered for sale.

\*\*\*\*\*

## **2018 Society Membership Fees: A Reminder**

Society membership fees were due from January 1st and whilst by now a majority of members who were financial for last year have renewed and we have a few new members, there are still a number who have overlooked their subscriptions. Currently the Society has about ninety financial members but there are at least another half of that number of members who have been financial for some or most of the previous three years and who have surely just overlooked paying their subscriptions for this year. Please consider whether you have paid and if not you are invited to rectify the situation.

The Society carries several insurances to protect the Society and members against injury or financial loss etc but insurance cover is subject to them being financial for the current year. According to the Society Constitution membership is valid in any new year up to March 31<sup>st</sup> when it will be deemed to have lapsed but would be re-instated immediately upon payment of the current year fee.

Subscriptions may be paid by : -

- i). Direct Credit / bank transfer to the Society's account at the Commonwealth Bank: -  
The Mineralogical Society of NSW Inc. BSB: 062016; Account number: 28023647
- ii). by sending cheque or Australia Post Money Order to the Treasurer or Secretary;
- or iii). by cash or cheque delivered to the Treasurer or Secretary at any General meeting.

## FIELD TRIPS APRIL - JUNE 2018

All minerals collected by the Society in the Bungonia SCA and Milton NP will go to The Australian Museum or Western Sydney University for examination.

Members attending Bungonia and / or Manuka are suggested to carry UHF/CB radios with a minimum 5km range.

NOTE: THE FOLLOWING PROGRAM MAY CHANGE DUE TO WEATHER CONDITIONS.

Date	Locality: Check MinView, DIGS and Mindat for minerals and site information	Leader
14 <sup>th</sup> – 16 <sup>th</sup> April	<b>Morton National Park – Tolwong Mine</b> – Remote Area – overnight bush camping - Open to all members – NPWS Science License conditions apply	Edward Zbik
21 <sup>st</sup> – 22 <sup>nd</sup> April	<b>Bungonia SCA Long Gully</b> – Remote Area – overnight bush camping - Open to all members – NPWS Science Licence conditions apply	Edward Zbik
26 <sup>th</sup> April	Members drive to Nyngan to start Cobar – Manuka field trips 530km approximately 6½ hours Wentworthville to Nyngan <small>Google Earth Time</small>	
27 <sup>th</sup> April to 2 <sup>nd</sup> May	Open only to Certified Members Check latest AJM for article on Manuka. Remote Area – some camping – SWMS and SOP apply Visit various sites - Manuka Pits, Hera, Nymagee, Girilambone, Tritton, Shuttleton, Mount Hope and Mineral Hill localities	Edward Zbik, John Chapman & Adam McKinnon
3 <sup>rd</sup> May	Members return to Sydney from Condobolin 440km approximately 5½ hours, Condobolin to Wentworthville <small>Google Earth Time</small>	
19 <sup>th</sup> – 20 <sup>th</sup> May	Bungonia SCA Block Up – Remote Area – overnight bush camping - Open to all members – NPWS Science License conditions apply	Edward Zbik
<i>Note: Visit to McAlpine Mine near Tumut rescheduled for later in the year.</i>		
23 <sup>rd</sup> June	GeoScience Canberra Visit, limit 10, afternoon Open to all Members. Arrange your own accommodation	Steven Petkovski
23 <sup>rd</sup> -24 <sup>th</sup> June	Paddy's River, Corrin locality, Canberra (may be subject to change) Open to all Members. Camping or Canberra Accommodation	Edward Zbik
28 <sup>th</sup> – 30 <sup>th</sup> June	Morton National Park – Tolwong Mine – Remote Area – overnight bush camping - Open to all members – NPWS Science License conditions apply	Edward Zbik

Dates for Bungonia/Tolwong may be changed due to weather conditions on the above dates.  
Register to be kept informed.

**Please Note:**

**Specimens collected by the Mineralogical Society of NSW from the Morton National Park and Bungonia State Conservation Area are under a NPWS Science License for research.  
Fossicking is prohibited in National Parks and will result in heavy fines, imprisonment or both. Tolwong HS is a private property, permission is required before entry.**

To register for any of the above field trips:  
Contact Edward Zbik by e-mail: [ecjz@optusnet.com.au](mailto:ecjz@optusnet.com.au)  
Any questions, call 0401 538 480 until 10:00pm

**TOLWONG MINE, Morton National Park**

Currently we have four members willing to spend three days in the bush.  
A minimum of six members is needed to revisit Tolwong. If interested, call Ed.  
The Society Science License expires 30th June 2018.

### BUNGONIA SCA

If three members propose preferred dates over a minimum of two days, (weekday or weekend other than a scheduled field trip dates) a trip to Bungonia SCA can be arranged.

Bungonia SCA Block Up – Remote Area – overnight bush camping.

Open to all members – NPWS Science License conditions apply.

### Future Field Trips

Ed is looking for assistance in running and organising field trips. If you know of a site you'd like to visit, be it a site you have already visited or a new site you know of or have found on MinView, Mindat, DIGS or another media publication, call Ed.

Those undertaking Safety Works Methods Statement Certification can gain an extra year Certification by leading a field trip to either a commercial, non-commercial, private property or State Forest locality. Those currently certified can extend their current certification by leading a field trip.

\*\*\*\*\*

## WELCOME

Welcome to new members John and Kaz Thorpe of Adamstown  
and Dayna McGeeney of Umina Beach

\*\*\*\*\*

## The SOCIETY COMMITTEE

PRESIDENT:	Dieter Mylius	Tel: (02) 9477 1060
	E-mail: <i>dieterm@internode.on.net</i>	
VICE-PRESIDENT:	John Chapman	Tel: (02) 9808 3481
	E-mail: <i>chapmanjr@optusnet.com.au</i>	
SECRETARY:	George Laking	Tel: (02) 9636 7145
	E-mail: <i>bglaking@tech2u.com.au</i>	
TREASURER:	Graham Ogle	Tel: (02) 9868 4446
	E-mail: <i>grahamo@diabetesnsw.com.au</i>	
COMMITTEE MEMBERS:	Peter Beddow	Tel: (02) 8810 8446
	David Colchester	Tel: (02) 9449 3862
	Geoff Parsons	Tel: (02) 9548 3289
	Simon Tanner	
	Edward Zbik	Tel: (02) 9638 6586
	E-mail: <i>ecjz@optusnet.com.au</i>	

\*\*\*\*\*

## THANK YOU

Many thanks to Marian Ong for bringing in extra refreshments to the March, and to several previous meetings. Marian is apparently exercising her culinary skills, to the Society's considerable benefit.

\*\*\*\*\*

## THE MARCH MEETING

At the commencement of the Meeting Ed Zbik reported on a number of projected **Field Trips** he was organising and advised about arrangements which would need to be made by members attending, including taking adequate equipment. Notably he suggested that two-way radios would be useful for a party making bush visits to remote sites. He also recommended that members look to obtaining their Safe Work Methods Certificates which would be needed for certain of the sites to be visited.

There were a few queries and comments by members. Peter Williams advised that certain sites in the Bungonia area were rich in palladium and recommended that visitors watch out for such minerals. Brian Holden reported that he had found some difficulty in renewing a **State Forests Fossicking** license apparently due to problems with the Forestry Corporation Website.

Graham Ogle announced that the next meeting of the **Micro-Mineral Group** would be at Brian England's house in Maitland and the Group would be studying Tasmanian minerals.

Jim Sharpe drew member's attention to the forthcoming annual **Society Auction** to be held at the May Meeting. He recommended that members who would wish to be offering minerals for sale at the Auction should start sorting through specimens from now on but limit themselves to ten items each. Experience with previous auctions had shown that not more than about eighty lots was the realistic number which could be sold in one evening. Members wishing to sell should provide him with a list by mid-April.

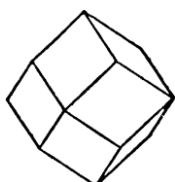
The first talk of the evening was given by Dieter Mylius as part of the 'Mineral of the Month' series

### 'Mineral of the Month – Garnets'

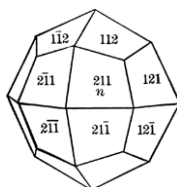
#### Dieter Mylius

The following summary of Dieter Mylius's talk on Garnets has been condensed from his Power Point presentation.

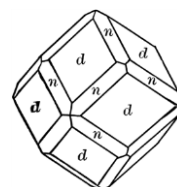
Garnets are not uncommon, and are often found in nice lustrous crystals, both simple and complex and in a large variety of colours. They are found in many metamorphic and some igneous rocks and also in gravels and sands because of their resistance to abrasion and alteration. Some are quite gemmy and can be cut as semi-precious stones. Garnet crystals are isometric and are found as dodecahedrons and trapezohedrons etc



Rhombic  
Dodecahedron



Deltoidal Icositetrahedron  
Trapezohedron



Various combinations

The name "garnet" probably comes from the name of the fruit granatum (pomegranate) because of the stone's resemblance to the inside of the fruit. 'Garnet' is a group name and not the name of an actual mineral. Therefore for example, andradite is not a variety of garnet it is a mineral species in its own right, but is part of the garnet group. It is not correct to label specimens "Garnet, var. andradite"

What are garnets? The traditional definition is that garnets are isometric (cubic) silicates with the general formula  $X^{2+}_3 Y^{3+}_2 (SiO_4)_3$  where  $X = Ca, Mg, Fe, \text{ or } Mn$  and  $Y = Al, Fe \text{ or } Cr$ .

There is also a Garnet Structural Group -  $X_3Z_2(TO_4)_3$  where X = Ca, Fe, etc, Z = Al, Cr, etc and T = Si, As, V, etc. These are minerals with a garnet structure, but are not necessarily silicates – the group includes arsenates and vanadates.

The common garnets belong to a group of silicates called the Nesosilicates from the Greek word Nesos for island, as the  $SiO_4$  tetrahedra form isolated units. They are sometimes also referred to by the older name of Orthosilicates. Other minerals in this group include olivine, zircon, topaz and titanite.

Garnets are isometric minerals and occur in most colours although blue is very rare and red-brown the most common. The hardness is from 6.5 to 7.5 (calcium garnets are softer, aluminium garnets harder) with refractive index 1.72 to 1.94 and SG between 3.1 and 4.3. Cut and polished stones if they are relatively free of inclusions may be quite bright and gemmy. Some stones with ‘silk’ inclusions can be cut to show a four-rayed ‘star’. (Four-rayed because garnet is isometric and not hexagonal like star sapphires with six-rayed stars).

COMMON GARNETS occur in two groups :-

Pyrospite garnets – Aluminium in the Y site, - Calcium free

Almandine  $Fe_3Al_2(SiO_4)_3$

Pyrope  $Mg_3Al_2(SiO_4)_3$

Spessartine  $Mn_3Al_2(SiO_4)_3$

Ugrandite garnets – Calcium in the X site, - Calcium rich

Andradite  $Ca_3Fe_2(SiO_4)_3$

Grossular  $Ca_3Al_2(SiO_4)_3$

Uvarovite  $Ca_3Cr_2(SiO_4)_3$

Garnets are unlikely to be pure and usually have variable compositions and also intergrowth and zoning within what appears a single crystal. They are named for the dominant species and are occasionally given a hyphenated name.

Andradite forms a series with Grossular garnets and another series with a rare garnet called Schorlomite (Ti rich).

Pyrope forms a series with Almandine, Grossular, Spessartine and another rare garnet called Knorringite (Mg and Cr rich)

Spessartine forms a series with Almandine. And so on .....

Varietal Names of Garnets

Demantoid – green Andradite (Cr rich)

Hessonite – cinnamon coloured Grossular (some Mn)

Melanite – black Andradite (Ti rich)

Rhodolite – rose-purple-red Pyrope/Almandine series (Fe,Cr,V)

Topazolite – sherry coloured Andradite

Tsavorite – green Grossular (Cr and V rich).

THE COMMON GARNETS:

**Almandine:** Iron Aluminium Garnet. Almandine is common in a range of regionally metamorphosed argillaceous rocks (shales) with common associations being staurolite, muscovite, biotite, chlorite, kyanite, feldspar and sillimanite. The crystals often have inclusions of mica, chlorite and other minerals. It is also found in some volcanic rocks as phenocrysts, in some thermal or contact metamorphic rocks and in ejected deep magmas.

**Pyrope:** Magnesium Aluminium garnet. Pyrope is not too common and usually occurs in high pressure igneous ultrabasic and metamorphic rocks such as peridotites, kimberlites and eclogites, and usually in granular form rather than crystals.

**Spessartine:** Manganese Aluminium garnet. Spessartine is found in granitic pegmatites and orebodies such as Broken Hill with high levels of Mn. It is also in skarns and from regional metasomatic origins. Associations are with quartz, muscovite and ore minerals.

**Andradite:** Calcium Iron garnet. Andradite is common in contact or thermally metamorphosed rocks derived from shaly limestones such as calc-silicate rocks, skarns and associated ore bodies. It is often associated with epidote, diopside, hedenbergite, wollastonite, vesuvianite and calcite. It grades into grossular quite commonly or may be zoned.

**Grossular:** Calcium Aluminium garnet. This garnet is commonly found in contact and thermally metamorphosed impure calcareous rocks or other rocks altered by calcium metasomatism (Ca introduced into system). Associations are with wollastonite, diopside and hedenbergite.

**Uvarovite:** Calcium chromium garnet. Uvarovite is found associated with serpentinites in association with chromite. Also in metamorphosed limestones and skarns where chromite is also present in associated serpentinites. Sometimes as crystals, often as fine smears.

#### LESS COMMON GARNETS – and some locations where they have been found.

Calderite –  $(\text{Mn}^{2+}, \text{Ca})_3(\text{Fe}^{3+}, \text{Al})_2(\text{SiO}_4)_3$  - Hoskins mine, Grenfell, NSW

Goldmanite -  $\text{Ca}_3\text{V}^{3+}_2(\text{SiO}_4)_3$  - Nevorlia Gold mine, Marvel Loch, Yilgarn Shire, WA

Majorite –  $\text{Mg}_3(\text{Fe}^{2+}, \text{Si}, \text{Al})_2(\text{SiO}_4)_3$  - Coolamon meteorite (Bourke, NSW), and Tenham meteorite (Qld), Coorara meteorite (Rawlinna, Dundas Shire, WA – TL).

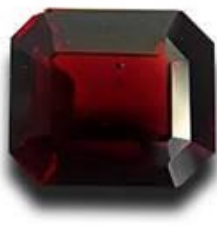
Kimzeyite -  $\text{Ca}_3(\text{Zr}, \text{Ti})_2((\text{Si}, \text{Al}, \text{Fe}^{3+})\text{O}_4)_3$  – Tiny grains at Kimzey calcite quarry, Magnet Cove, Hot Spring Co, Arkansas, USA

Hibschite/Hydrogrossular -  $\text{Ca}_3\text{Al}_2(\text{SiO}_4)_{3-x}(\text{OH})_{4x}$ . Originally thought to be their own species, but are now considered to be varieties of Grossular containing hydroxyl ions

Schorlomite -  $\text{Ca}_3(\text{Ti}, \text{Fe}^{3+})_2((\text{Si}, \text{Fe}^{3+})\text{O}_4)_3$ . Calcium titanium iron garnet. Some material labelled and sold as “Schorlomite” is actually titanian andradite.



Almandine garnet in mica-schist associated with biotite granite at Mount Lady Franklin, Barnawartha, North, Wodonga, Vic



‘Cushion-cut’ garnet



‘Star’ cabochon garnet



Collection of faceted garnets



Roll of abrasive garnet paper



Spessartine garnet with muscovite and feldspar, Tongbei, Fujian Prov, China.



Andradite, var. Demantoid due to trace amounts of Cr and Fe. From Korkodin, Southern Urals, Russia

**USES OF GARNETS:** - Primarily as gemstones and abrasives.

Gemstones (popular since Roman times and not too expensive)

Abrasive – as papers, belts, powders. Abrasive water jet cutting. Abrasive blasting.

Water and other chemical filtration.

The final image of the presentation was accompanied by the speaker providing the following recommendation : -

“GARNETS - Now they have been introduced, go out and find some”.



Society members looking for garnets and molybdenite, Mt Tennyson, NSW, 2014

\*\*\*\*\*

The second presentation for the evening was given by Society member Kevin Capnerhurst. Kevin is a senior geologist with the Geological Survey of NSW of the Department of Primary Industries, (DPI), based in Orange. He originally studied for his degree in Geology/Earth Science at the University of British Columbia in Canada. Kevin has been working for a number of years on a complete system up-grade of the Geological Survey’s Minview data-base of NSW mineralization, geoscientific data, and current and historical mining sites.

## **The New Minview, Much More Than On-line Mineral Deposit Data**

### **Kevin Capnerhurst**

Kevin Capnerhurst presented his lecture on the new Minview 3.0 by means of a Power-Point program and also by accessing the Minview Internet site as he spoke, referring to and demonstrating the very large amount of information that could be accessed. Notably constantly shown was the ability of Minview to look at an area or site and to be able to expand or contract the entire view. As well as changing the view to show geological features, mineral occurrences, and land topography the program allowed ‘zooming’ in or out as needed to provide either state-wide views or views down to individual mine sites, excavations, dumps, processing plants and access roads. The new Minview was released for full public access in mid-2017 and among many other improvements on earlier versions has provided an amount of satellite and aerial imagery.



Quoting from the Minview Website : -

'MinView is a web mapping application that provides free access to view, search and download a comprehensive range of geoscientific data for NSW. MinView also provides access to a range of supporting reference data, including current and historic exploration and mining titles, areas available for exploration, and cadastral information.'

MinView: Data content, 368 layers, and counting...

Geoscience

Geological mapping data  
Field observations  
Drilling information  
Locations of all recorded mineral occurrences  
Surface sample locations and Geochemistry  
Geochronology  
Petrography  
Fossils

Reference data

Titles  
Base imagery  
Topographic base maps  
Administrative boundaries  
Infrastructure and utilities  
Reserves, parks & forests  
Planning instruments

During the course of his presentation Kevin Capnerhurst worked through an amount of the new Minview facility, bringing up numerous views of areas of New South Wales and then demonstrating how the areas or sites could be examined in more detail, bringing up topographical and then mineralogical views, enlarging to zoom in on any selected area or site and high-lighting mineral occurrences and mining activities. He also described a few aspects of the obvious large amount of work he had been involved in to put the new program together.

At the end of his lecture Kevin Capnerhurst dealt with a number of questions and concluded by stressing that Minview 3.0 is readily accessible through the Internet Website.

\*\*\*\*\*

## FORTHCOMING EVENTS

**Blaxland Gem & Mineral Club Inc. Open Day Saturday 5th May 2018.**

'We are pleased to advise that Blaxland Gem & Mineral Club will be holding its Annual Open Day on Saturday 5th May 2018, details are as follows:

Saturday 5th May 2018. From 8am to 3pm at 15 the Valley Rd, Valley Heights, NSW 2777.  
Displays and sales of Lapidary work, rocks and slabs.  
Demonstrations on cutting, grinding and polishing gemstones.  
Refreshments available. **FREE ADMISSION.'**

\*\*\*\*\*

**SYDNEY CRYSTAL SHOW - SYDNEY SHOWGROUND**

**12th MAY 2018**

Now in its 4th year the Sydney Crystal Show will be held in the Howie Pavilion in the Sydney Showground at Sydney Olympic Park on Saturday 12th May 2018 from 10am-6pm.

'Join us and many thousands of visitors over one massive day on Saturday 12<sup>th</sup> May 2018 for a spellbinding display of ancient natural treasures!. Minerals, Crystals, Fossils, Meteorites, Opals, Gems & Jewellery will be available, plus much more.

We invite Traders, Prospectors, Opal Dealers, Stone Dealers, quality Tailgaters and Jewellers to attend and promote your business to many thousands of new customers.

Nearly half of Sydney lives within 30 minutes of the Sydney Showground. It is purpose built for great shows and large crowds. Food available onsite. Catch the train to Olympic Park Station or drive and park in one of the 10,000 parks at the complex. There are several hotels onsite, the Ibis and Novotel are offering discounts for those attending the show. An opportunity not to be missed for traders and visitors alike.

Entry is \$5 for adults and Kids under 12 are free!

'See the website for more info: [www.sydneycrystalshow.com](http://www.sydneycrystalshow.com)

Interested traders contact Sarah & Stu: [rock@rockncrystals.com.au](mailto:rock@rockncrystals.com.au)

or by phone 02 9559 6737 or Stu 0404 470 494.

Thank You Sarah & Stu **RocknCrystals 02 9559 6737'**

[rock@rockncrystals.com.au](mailto:rock@rockncrystals.com.au)

[www.rockncrystals.com.au](http://www.rockncrystals.com.au)

[www.facebook.com/rockncrystals](http://www.facebook.com/rockncrystals)

[www.instagram.com/rockncrystals](http://www.instagram.com/rockncrystals)

\*\*\*\*\*

## **28<sup>th</sup> LISMORE GEMFEST 2018**

The 28<sup>th</sup> Lismore Gemfest will be held in the Lismore Showgrounds, Alexandra Parade, North Lismore, over the weekend of the 19<sup>th</sup> and 20<sup>th</sup> of May next. Saturday from 9am to 5pm and Sunday from 9am to 3pm.

'Lismore GEMFEST is the biggest annual event in the country devoted to lapidary and allied arts and is organised by the Lismore Gem & Lapidary Club Inc. Exhibitors come from all parts of the country and range from amateurs to the most experienced professionals. Everything from rough stone for cutting, through to finished jewellery in all price ranges, along with mineral specimens, fossils, gold nuggets and meteorites are to be found on display. There are gem sieving activities for children, demonstrations of jewellery making and other craft activities.

A range of food outlets are available, along with free parking in the Lismore Showground. Visitors from outside of the local area can enjoy special deals for camping on site. There is something for all ages and tastes at this event. Come once and we are sure you will become a regular.'

Further information from : - [bruce.copper@bigpond.com](mailto:bruce.copper@bigpond.com), Telephone 02 6688 8280

Or from the Website : - [www.gemclublismore.org.au](http://www.gemclublismore.org.au)

\*\*\*\*\*

## **CANBERRA ROCK SWAP 2018**

The Canberra Lapidary Club Winter Gem Show will be held in the Mallee Pavilion Exhibition Park, (EPIC), off the Federal Highway in Canberra over Saturday and Sunday the 26<sup>th</sup> and 27<sup>th</sup> of May from 10.00 am to 5.00pm each day.

'Dealers will be selling jewellery, rough & cut gemstones, fossils, rocks, mineral specimens, opals, beads & beading supplies, and lapidary equipment & supplies. There will also be displays of Members' collections, demonstrations of capping, faceting & jewellery making. Food and drinks will be available for purchase. Entry fee: \$5 adults, \$10 family, \$2 children/concession.

## **BANKSTOWN GEM AND MINERAL FAIR**

Over Saturday the 2nd and Sunday the 3rd of June

The Arena Sports Club, 140 Rookwood Road, Yagoona NSW 2199.

Hosted by the Bankstown and Districts Lapidary Club and Crystal Habit.

'Traders from around Australia will be displaying their wares as well as displays and demonstrations by the Bankstown & Districts Lapidary Club. Items for sale by the many traders there will include Jewellery, gemstones, beads, opals, carvings, gem rough, lapidary cutting rough, fossils, meteorites, metaphysical and healing crystals and mineral specimens from all over the world.

A great day out for the whole family. Adults \$7, kids with parent/s are free! Plenty of parking available at the venue. Opening hours are 9:30 till 5:00 on Saturday and 9:30 till 4:00 on Sunday. For more information please contact Peter at [raregems@optusnet.com.au](mailto:raregems@optusnet.com.au) or phone mobile 0412 333 150.'

\*\*\*\*\*

## **THE JOINT MINERALOGICAL SOCIETIES OF AUSTRALASIA 41<sup>st</sup> ANNUAL SEMINAR**

The 41<sup>st</sup> Annual Joint Seminar will be held over the Queen's Birthday long weekend of the 9<sup>th</sup> to 12<sup>th</sup> of June. It will be hosted by the Mineralogical Society of Victoria and held in the Mercure Hotel & Convention Centre, 613 Main Road, Ballarat. The theme for this year's Seminar will be : -

### **'A Golden Age of Mineral Deposits and Mineralogy'**

'The Seminar program will comprise 1½ days of formal sessions to be presented by great speakers, experts in their fields. The speakers will include Ralph Bottrill, Joel Brugger, Steve Dobos, Tony Forsyth, John Haupt, Dermot Henry, Alan Longbottom, Rod Martin, Ross Pogson, Steve Sorrell and Malcolm Southwood.

The Sunday afternoon will be available for micro collectors in conjunction with a swap and sell session. The last two days are allocated to field trips. The first, on Monday the 11th of June, will be to the well-known locality of Mt Shadwell. The second locality will be visited on Tuesday 12th June, and is tentatively the Mineralogical Reserve at Dookie.'

Registration forms can be down-loaded from the Mineralogical Society of Victoria website [www.minsocvic.org.au](http://www.minsocvic.org.au) under "Society News, 2018 Seminar". The (NSW Society) secretary George Laking will have copies.

Registrations will cost \$150 and \$50m for the dinner. They are due by 10th May 2018.

Contact and information from: Fred Kapteina, Secretary Mineralogical Society of Victoria Inc.

Registrar & Treasurer Seminar 2018, email: [fkaptein@bigpond.net.au](mailto:fkaptein@bigpond.net.au)

\*\*\*\*\*

## **WINDSOR GEM & MINERAL FAIR**

Over Saturday and Sunday the 16<sup>th</sup> and 17<sup>th</sup>, of June at the Windsor Function Centre, on the corner of George and Dight Streets, Windsor. Saturday 9.30 am to 5 pm, Sunday 9.30 am to 4 pm.

'A bi-annual fair hosted by The Hawkesbury Valley Lapidary Club and Crystal Habit, the show will have a number of traders from around Australia displaying their wares as well as displays and demonstrations by the Hawkesbury Valley Lapidary Club.

Items for sale by the many traders there will include Jewelry, gemstones, beads, opals, carvings, gem rough, lapidary cutting rough, fossils, meteorites, metaphysical and healing crystals, mineral specimens from all over the world. A great day out for the whole family. Adults \$7, kids with parent/s are free! Opening hours are 9:30 till 5:00 on Saturday and 9:30 till 4:00 on Sunday. There is also a great lucky door prize for one lucky person who comes!

For more information please contact Peter Beckwith at *raregems@optusnet.com.au* or by mobile phone 0412 333 150'

\*\*\*\*\*

## **BLAXLAND GEM & MINERAL CLUB GEM SHOW**

Saturday and Sunday, August 19th and 20th 2017 in the Glenbrook Community Hall, Great Western Highway, Glenbrook, NSW. (Next to Glenbrook Theatre), just west of the Information Centre.

From 8 am to 4 pm daily. Entry: Adults: \$3 Children \$1

Displays of lapidary work and gem, mineral and crystal sales.

Refreshments available.

*<http://www.freewebs.com/blaxlandgemmineralclub/BGMCshow.htm>*

\*\*\*\*\*