



THE MINERALOGICAL SOCIETY OF NEW SOUTH WALES INC

Website: www.minsocnsw.org.au

Please address all correspondence to :-
The Secretary, 58 Amazon Road, Seven Hills, NSW 2147

NEWSLETTER APRIL 2021

The April Meeting will be held by virtual mode on Friday the 9th of April, (second Friday), at 7.30 pm.

The program at the April Meeting will include a lecture to be given by Paul Melville on ; -

Rum Jungle and other collecting sites in NT

FORTHCOMING MEETINGS AND PROGRAMS

Society Meetings will be held throughout the year on each first Friday except in April and October. In October the first Friday is before the long weekend when the **43rd Joint Mineralogical Societies Seminar** will be held and the Friday meeting may therefore be cancelled.

Meetings held at the Lapidary Club:

By now with the almost complete removal of pandemic restrictions in Sydney Society meetings could re-commence being held at the Parramatta and Holroyd Lapidary Club. However earlier in the year when it was not so clear about the rate and degree of restrictions being lifted arrangements were made with speakers from outside Sydney and interstate to deliver lectures by virtual mode.

Two more speakers had been scheduled to deliver virtual lectures, in April and May although unless there are any changes or re-imposition of pandemic restrictions the June Meeting should be held 'live' at the Lapidary Club and will be the **Annual Mineral Auction**.

May 7th: There will be a virtual lecture to be given by Ralph Bottrill on '**The Mt Lyell Mines in Tasmania**'.

June 4th: Member's **Annual Mineral Auction**

July 2nd: The program will include a mini-talk to be given by David Colchester on: - **Datolite from Albion Park**.

Aug 6th: The Society **A.G.M.** will be held in August as normal to be followed by the **Mayne/Walkers Memorial Lecture**. The lecturer and subject are yet to be finalised.

April 17th & 18th: **National Gem & Crystal Expo**: The Society has been invited to provide a display table at the **Expo** being held in the Hawkesbury Indoor Stadium, 16 Stewart Street, South Windsor. John Chapman is organising members to provide display material and volunteers to supervise the table and answer inquiries from visitors during the event.

The SOCIETY COMMITTEE

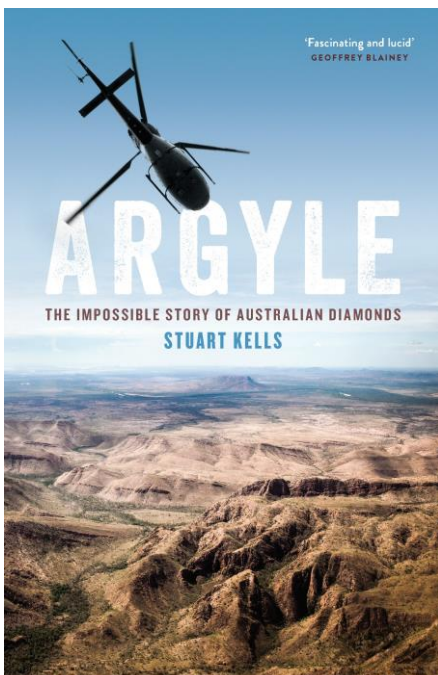
PRESIDENT:	Dieter Mylius	Tel: (02) 9477 1060
	E-mail:	<i>dieterm@internode.on.net</i>
VICE-PRESIDENT:	John Chapman	Tel: (02) 9808 3481
	E-mail:	<i>chapmanjr@optusnet.com.au</i>
SECRETARY:	George Laking	Tel: (02) 9636 7145
	E-mail:	<i>bglaking@tech2u.com.au</i>
TREASURER:	Graham Ogle	Tel: (02) 9869 1416
	E-mail:	<i>quartzandsirius@hotmail.com</i>
COMMITTEE MEMBERS:	Peter Beddow	Tel: (02) 8810 8446
	David Colchester	Tel: (02) 9449 3862
	Geoff Parsons	Tel: (02) 9548 3289
	Edward Zbik	Mobile: 0401 538 480
	E-mail:	<i>edward.zbik@bigpond.com</i>
	Haley Bambridge	Mobile: 0413 100 344

WELCOME

WELCOME to new members Steve Sorrell of Ballarat
and Dr Michael Barnet and Pandora Tse of Gladesville

NOTES

New Book:



Argyle: The Impossible Story of Australian Diamonds

by historian Stuart Kells

2 March 2021 - 9780522877250 - PB - \$34.99

Dominika Greinert
Direct Sales Executive,
Melbourne University Publishing

Level 1, 715 Swanston Street, Carlton VIC 3053
M: 0416 191 729

E: dominika.greinert@unimelb.edu.au

This is the story of the intrepid Australian geologists who discovered pink diamonds in the Kimberley.

"Rockzette"

Last year the Society was sent a few copies of the 'Rockzette', the newsletter of the **Tea Tree Gully Gem & Mineral Club** in Adelaide. Apart from club news and articles the newsletter features a large amount of colourful images of lapidary and faceting work, polished slabs, cabochons, gemstones and mineral specimens but also quite a range of amusing notes and cartoons.

Members interested in examining more issues of the Rockzette will find the current and several years previous issues of the newsletter on the Club website : -

Web Address: <https://teatreegullygemandmineralclub.com>

Correction to Mineral Name:

Thank-you to Keith Compton for pointing out that the caption under a photograph in the Society March Newsletter of a zeolite specimen from the Garrawilla area stated the mineral to be stellerite when it is actually mostly heulandite. We will have to alter that caption.

The MARCH MEETING

The March Meeting was conducted in virtual mode and chaired by the Society President, Dieter Mylius. It was attended by about thirty members.

Ed Zbik described the forthcoming field trip over the 13th and 14th of March which would be visiting the **Cordillera mine** with the party camping overnight at **Tuena**. Ed referred to several images in **Mindat** of a previous trip in March 2015 showing a small party including Dieter Mylius working on the site and also showing the smelting chimney and the dumps. A variety of tungsten minerals were recovered from the mine area, the party having had the fortune to locate a small patch of specimen-productive ground.

Ed further described a trip made two weeks previously to the **Duckmalloi** farm site near Oberon and was able to project onto a shared screen images of the area and specimens found during the trip. The photographs had all been taken by Dennis O'Brien and showed the area heavily overgrown by blackberries including the old quarry which had to be skirted around its periphery. The area also turned out to be well populated by tiger snakes, party members observing several of the unwelcome local inhabitants. One snake had watched Mark Walters working on a patch of ground for a time before moving off into the bush.

Significant areas of the site included the Duckmalloi South limestone garnet area, the Duckmalloi North limestone quarry and the open cut. Minerals recovered included andradite, apophyllite, quartz with chalcopyrite, small pieces of bismuthite, scheelite, sphalerite, magnetite and epidote. In answering a question about the property Ed Zbik reported that in addition to the blackberries and since there was no livestock kept on what was operated as a hobby farm, the grass was waist-deep.

Graham Ogle reported that the next **Micro-Mineral Group** meeting was at 1.00 pm on Sunday the 21st of March at Mark Walter's house in Hornsby. The theme would be on New England minerals. He later recommended that members bring specimens of minerals collected on the recent field trip to Duckmalloi to be also examined and identified. An invitation with further details would be sent in due course to the usual Group attendees and any other members who were also interested to attend were recommended to contact Graham to be kept informed of the meetings.

John Chapman advised that the monthly **Meeting Program** had been changed since the previous Newsletter had been published and the **Mineral Auction** which had been scheduled for April had been put back to June. In order to provide and organise Zoom virtual meetings two interstate lecturers had been lined up for the April and May meetings.

With no further announcements Dieter Mylius introduced the speaker for the evening.

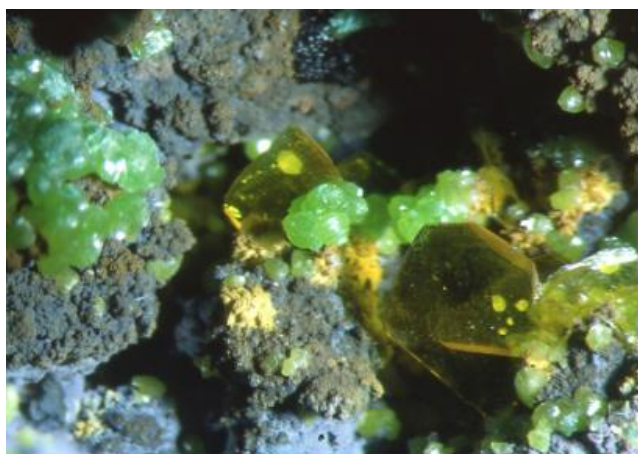
Peter Downes is the curator of Minerals and Meteorites at the West Australia Museum and apart from being responsible for the Museum's original collection is also responsible for the Simpson Collection, the Mineral Division Collection, (MDC), the Rock Collection, the Gem Collection and the Meteorite Collection.

Peter Downes has been involved in the setting up of a brand-new museum in W.A. with the aboriginal title of 'Boola Bardip', which means 'Many Stories'. He is also the editor of the **Australian Journal of Mineralogy** and is the author of a large number of articles and publications.

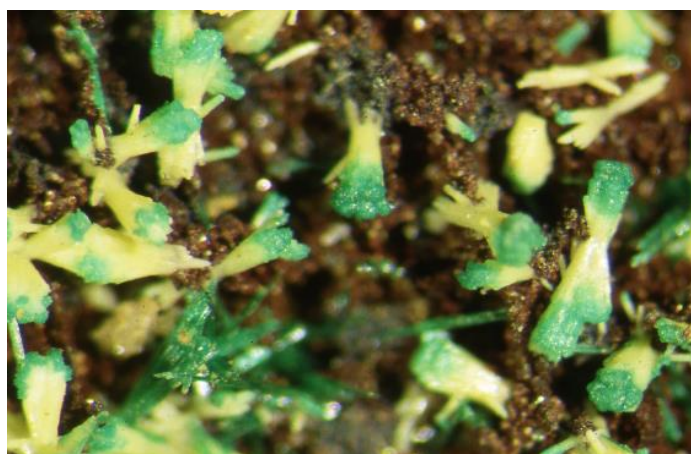
The Whim Creek deposit in W.A.

The Whim Creek copper mine has proven to be one of the mineralogical treasures of Western Australia's rich mining history. The deposit was discovered in about 1887 by a prospector named Philip Saunders and mining commenced in 1889. Saunders was from Queensland and in 1882 had discovered traces of gold in the East Kimberley which was the first report of gold from W.A. Later in 1885 more substantial finds triggered the first gold rush in the state and a find of a nineteen-ounce nugget. Mining operations got underway in the late 1800s and early 1900s with ore being shipped to the coast for processing.

Peter Downes' lecture was extensively illustrated by a large series of images, firstly from the early years of the mines and showing the mine workings, surface and underground and later showing a large number of mineral specimens, the speaker describing the features of many as he spoke. The mine has produced a number of different minerals with over forty found within the oxidized and supergene zones. Whim Creek is famous for its wulfenite and is the only known location in Australia of murdochite. There has been quite a variety colours and habits of pyromorphite found. Towards the end of his photo presentation Peter Downes showed a few images of the new W.A. museum buildings and some of the interior displays including the 'Crystal Portal'.



Wulfenite and pyromorphite



Pyromorphite, malachite and pseudomalachite

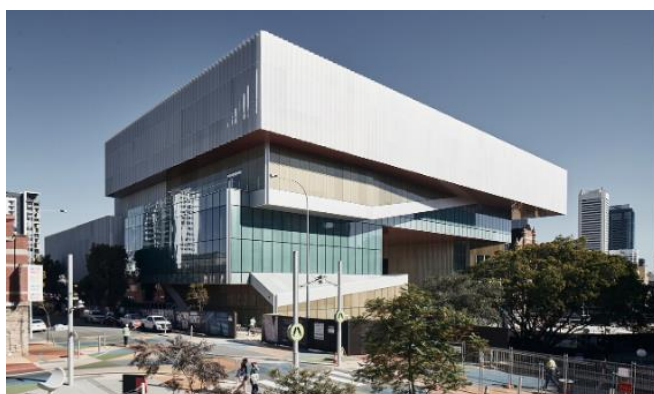
At the end of his lecture Peter Downes was asked to describe the background to the Simpson Collection. Dr Edward S. Simpson was a mineralogist with the Geological Survey of Western Australia until his retirement in 1937. Through the first part of the last century from 1897 to 1939 he built up a reference collection of about ten thousand West Australian minerals. His description of the collection became a three-volume text, *'The Minerals of Western Australia'*.



Wulfenite



Secondary minerals, Whim Creek mine



Western Australian Museum, Boola Bardip



The 'Crystal Portal' Western Australian Museum

SIMPSON WA UPDATE

During the Mineralogical Seminar last year in October the announcement was made that a team of people in West Australia had initiated a project, '**Simpson WA Update**' which is intended to expand the information originally provided by E.S. Simpson in his three books. The announcement introducing the project noted that when Simpson compiled his work, completed by others between 1948 and 1953, when about 450 minerals were described, another 250 W.A. minerals have since been identified.

A text of the announcement was printed in the Society November 2020 Newsletter and the first part of the message is repeated following: - .

'To all those volunteers interested in joining the collaborative *SimpsonWA project*

At a recent July 2020 general meeting of the WA branch of the Mineralogical Society a new collaborative project was introduced. This is a follow-up email to share the scope of this project and further details with all members and volunteers with an interest in the project.

- The project was proposed by Vernon Stocklmayer and was approved by the Committee as a stimulating mineralogical exercise to which all MinSocWA members and others can contribute.

- Numerous minerals new to Western Australia have been discovered since the publication of the three volumes of Dr. Edward Simpson's "Minerals of Western Australia" in the early 1950s. These volumes are an exhaustive work and have provided an enormous amount of detail on each mineral, but much has been discovered since.
- The *Simpson WA update* project focuses on the write up of all the minerals that were NOT included in Simpson's earlier work. There is no intention to update the minerals in Simpson's published volumes.'

FORTHCOMING EVENTS

National Gem & Crystal Expo

AGAMEXpos along with the Hawkesbury Valley Lapidary Club will be holding the National Gem & Crystal Expo over the weekend of the 17th & 18th of April at the Hawkesbury Indoor Stadium, 16 Stewart Street, South Windsor.

Information on the Expo from the AGAMEXpos Website : -

'This will be the biggest indoor expo In Sydney and possibly New South Wales so definitely worth a visit. We will be having in excess of 30 traders from all over Australia displaying everything from Amber to Zircon as well as tools and hardware supplies, all sorts of cutting material, gemstones, fossils, meteorites, mineral specimens crystal infused candles, metaphysical needs, crystals, a wide range of opal and a huge number of decorator pieces including geodes and carvings. The Hawkesbury Valley Lapidary Club will be displaying their goods as well all of which is made by the club members themselves.'

Further information on AGAMEXpos may be found on the Website www.agamexpos.com.au or inquiries made to Peter Beckwith, Australian Gem & Mineral Expos, Mobile No 0412 333 150

LISMORE GEMFEST 2021

The annual Gemfest is being held in the Lismore showgrounds on Alexandra Parade in Lismore over the weekend of Saturday May 15th and Sunday May 16th 2021. Entry \$5 Adults 1 Children (under 12) Cash Only. Open from 9:00am – 5:00pm Saturday 9:00am – 3:00pm Sunday. Camping within the showgrounds is available upon application.

Information on the Gemfest from the Lismore Lapidary Club Website : -

'The Annual Lismore Gemfest was started in 1990 by the Lismore Gem & Lapidary Club Inc. Since then it has evolved into one of Australia's largest Annual Gem and Mineral shows with over 140 Tailgaters and Dealers over two massive days of selling and displaying Minerals, Gems, Fossils, Jewellery and Equipment from all over the world. The Gemfest is Celebrating 30 years in 2021 and is a major fundraiser for the Lismore Gem & Lapidary Club.'

Canberra Lapidary Club Winter & Spring Gemcraft & Mineral Shows

To be held in the Exhibition Park (EPIC) - Mallee Pavilion
Winter Show : Sat 29 May Sun 30 May 10am to 5pm 10am to 4pm
Spring Show : Sat 30 Oct Sun 31 Oct 10am to 5pm 10am to 4pm

Gem, Mineral, Jewellery & Lapidary dealers. Sales of minerals, fossils, jewellery,
rough & cut gemstones, lapidary equipment & supplies, opals, beads.

Bankstown Gem and Mineral Expo

Over the 5th & 6th of June 2021 in the Arena Sports Club, 140 Rookwood Road, Yagoona, Sydney.
